



**NOVEMBER
2018**

T U R N I N G Threads G

What's Inside

PREZ SEYZ
Page 2

OFFICER ELECTIONS
Page 3

NOVEMBER DEMO
Page 5

SHOW AND TELL
Page 14

PEN WOOD OF THE MONTH
Page 17

TURNING TIP
Page 22

LIBRARY UPDATE
Page 24

PREZ SEYZ

Well, here we go again. I've been riding herd on this group for almost a year now. It has been a great trip and all of you have made it a pleasure. Now the bad news, you have to put up with me for another year, but our secretary has decided to step down so we do need a replacement and would like to have a volunteer. The job is not too tough as Tom does the News Letter and Mary has accepted the position of photographer. We try hard to keep everyone's responsibility down. If you are willing to help out, please send me an email at elk.stir@gmail.com.



It was great to have Amanda from Feed My People with us at Wednesdays meeting. You can tell that they really appreciate our help in their fund raiser. That said, if you haven't, now is the time to start turning out some bowls. If everyone will get on board, I'm betting we can get close to 500. I've heard that we are over 200 already and you've got until the February meeting to get them ready. Each one just turn 10 and we'll make it.

Yes, I know we all have other projects going on with Christmas just around the corner and remember the December President's Challenge is a Christmas item, a tree ornament, a centerpiece or some type of Christmas item but we can do it. Prizes of gift certificates to Craft Supplies will be given out.

Wow, I'm sure that I've used up way too much space in the news letter so I had better sign off. See you all in December.

Make the chips fly. Prez Duane **

Officer Elections and Other Positions

Nominations for and election of officers are coming up once again. Of the 5 officers, one has decided not to run again – the Secretary. John DeRyckere has expressed pressing work and other issues make it difficult for him to adequately perform the tasks of a Secretary.

In the August 2018 issue of this newsletter the duties of the secretary were presented. These duties as defined by the AAW are:

The Secretary ensures that records are maintained for the proceedings of all business meetings of the chapter. His/her duties include (1) Records and writes the minutes for each chapter executive board meeting, (2) Assist with all of the business and affairs of the chapter, (3) Serve on committees as needed.

Going over each of the three duties as pertained to the Chippewa Valley Woodturners Guild:

(1) Records and writes the minutes for each chapter executive board meeting

Our board meetings are usually short and recordings of the meeting can be brief.

Yearly report to AAW on officers.

(2) Assist with all of the business and affairs of the chapter

All board members cooperate in getting the needed affairs done. No one is left to do a difficult activity alone.

(3) Serve on committees as needed

See #2 above.

One duty that John has done but not required is to Inform the membership of coming monthly meetings. Another duty not required but necessary was to write up the demonstrations. Rotating scribes are favored as a way to replace this much needed function.

Our photographer Bruce Lindholm would like to scale down his photography duties. The position is not a board position. This position would be

best served with rotating persons. Camera is not provided by CVWG.

AAW requires any affiliated groups to have officers and a Secretary is one of them. Having any present officer also serve in this position is not fair to the other officers. It also has the effect of having one less voice on the board. Eventually the persons serving as more than one officer will experience burn out and when no one wants to be an officer then the CVWG will cease to exist. This has happened to many groups in the past.

Our group is nearing a point where the original enthusiastic founders and members are either gone or are experiencing issues that have forced them to reduce their activities in the group. In order to continue having excellent facilities and excellent demonstrations that CVWG has, we need members to participate not only giving demonstrations but also participate on the board level. Take a chance and join the CVTC Board of Directors or volunteer to do a demonstration or serve as a photographer. **

Tom Leonard

Veterans Event at CVTC

I want to thank you and the membership of the Chippewa Valley Woodturners Guild for the turned pens for the “[Give Vets a Smile](#)” on November 3, 2018, hosted at CVTC. We distributed all the pens to veterans, and served over 90 veterans for dental care, along with haircuts, chair massages, and education by Respiratory Therapy and Nursing students and faculty.

I have attached a picture of the students who were distributing the pens to the Vets as they were preparing to leave. I printed the October Newsletter Cover, so everyone knew who provided the pens.



Thank you very much, Don Raymond. **

NOVEMBER DEMONSTRATION

Making a Vacuum Chuck

Joe Nycz

Joe Nycz has been turning since 2010, and has turned over 1500 items. Prior to retirement he was an industrial mechanic, which helps to understand how he has become such a prolific innovator in the club.

Tonight, Joe showed off his vacuum pump system, and also demonstrated it's use. One of the more complicated tasks in turning a bowl, platter, or other object is turning the foot. A well turned foot is a signature of a well turned item, a indicator that the artist cared enough about his craft to spend time refining ordinarily hidden features.



Assembling the chamber

There are a number of methods of turning the bottom. Jumbo jaws, which replace the traditional jaws on your 4 jaw chuck fit around the rim (or inside the rim, depending on shape) of the vessel. There are a couple of weaknesses with this. First, it isn't a very secure holding method, and it isn't uncommon to lose your work as it flings off. The odds of this occurring can be reduced by using the tailstock as much as possible, and possibly turning down the foot until there's only a small spindle supporting it. A knife or chisel can then knock off this spindle. Second, sizing the jumbo jaws can be tedious.

Donut chucks are the most secure method, but you do need a chuck sized to your piece.

A vacuum chuck works by applying a vacuum between the chuck and the workpiece. Joe prepared a writeup for the assembly, so I will only add some additional notes and details I captured in the meeting.



Putting chamber onto headstock

If the piece isn't true to the chuck then air gaps can result, meaning a less secure hold. Joe remedies this by putting a piece of rubber between the piece and chuck.

To help with truing the bowl or platter, Joe uses the release valve to reduce the pressure and allow him to fine tune it's placement. He was able to get it running quite true during the demonstration, even on a very large platter.

When seating the bearing into the chuck and applying epoxy be careful not to epoxy over the bearing, they don't work quite as well that way.

PVC, which is used for the chuck, isn't perfectly true, but it's pretty easy to fix this by spinning the chuck on the lathe and using a scraper or other tool.

They are intermediate in terms of workpiece security, and backing up with the tailstock is still appropriate (it's never not appropriate!)

Vacuum is measured in terms of pounds per square inch, so the larger the diameter of the vacuum chuck, the more pressure exerted on the wood. If you're turning a thin walled piece on a large enough chuck implosion can result.

If the chuck isn't large enough then the piece will be less secure.



Placing bowl on the vacuum chamber



Joe Nycz's entire vacuum chuck setup
See page 9 and 10 for individual parts
and for step by step assembly of the
vacuum chuck

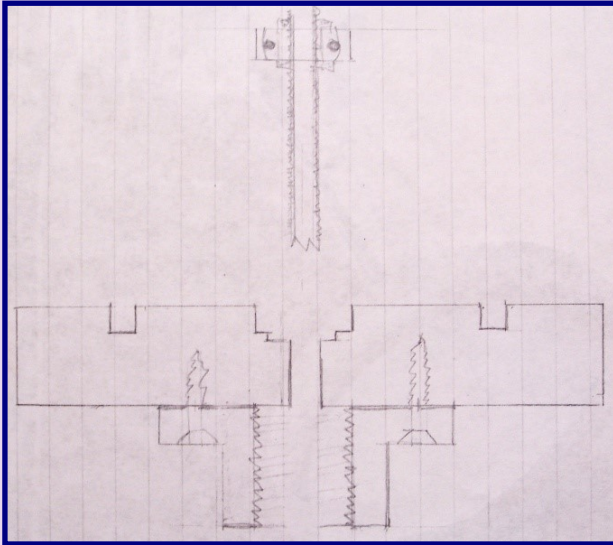
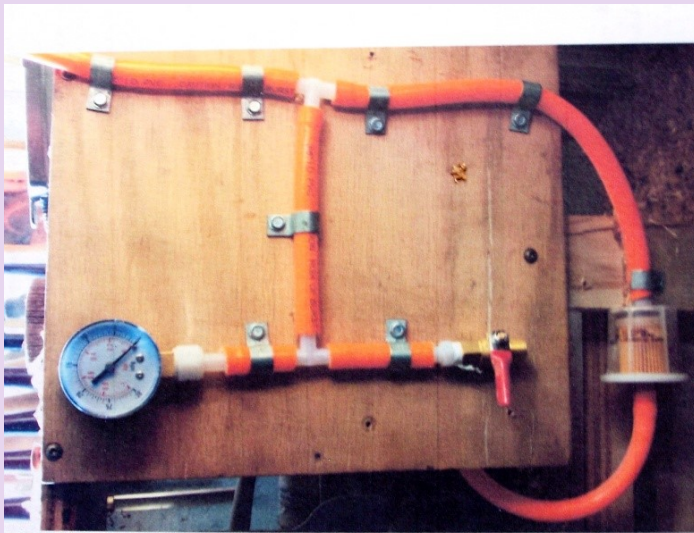
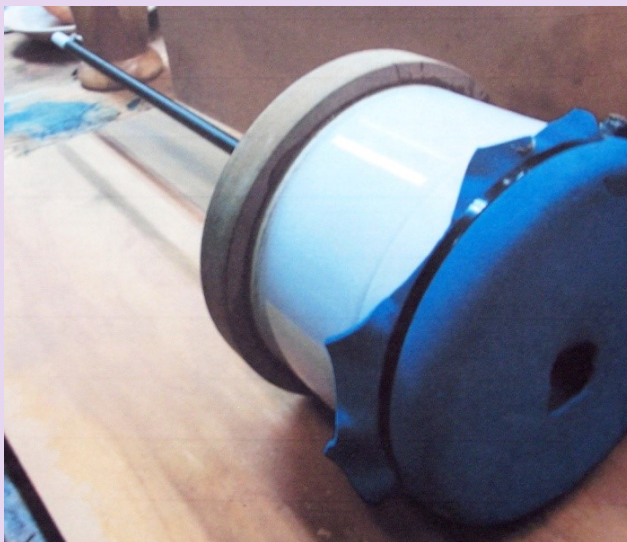


Diagram showing faceplate, MDF attached to faceplate, groove for the vacuum chamber and configuration for drilling into the MDF



Configuration of tubes, valve, filter and vacuum gauge



Completed vacuum chamber with attached foam over chamber, chamber attached to the MDF and the extending lamp rod

VACUUM CHUCK ASSEMBLY

1. Purchase or make a faceplate. Wood, Plastic or Metal. I prefer metal (Steel or Aluminum).
2. Make the Back for the chuck. I prefer MDF over wood. MDF is stable and the epoxy adheres to it better. The back will have to be mounted to the face plate and turned on the lathe. Groove cut for the vacuum chamber and a recess hole drilled for the bearing and lamp rod nuts and a 13/32 through hole for the lamp rod.
3. Make the tube using lamp rod (3/8) inch) and 2 lamp rod nuts. The lamp rod is over sized and the end that mounts to the bearing will have to be filed or ground to fit the bearing.
4. The bearing needs to be the sealed type with a 3/8 inch hole.
5. Mount the bearing on the end of the lamp rod using 2 lamp rod nuts. Note: Rough up the surface that the epoxy is applied.
6. Install the bearing and lamp rod to the chuck back MDF using epoxy being very careful not to get the epoxy on the inner part of the bearing and the nuts. This can be done on the lathe in a vise or some way to keep the bearing and lamp rod aligned while the epoxy sets. I wait overnight.
7. Install the Vacuum chamber with epoxy in the groove that was cut on step 2.
8. Cover the face of the vacuum chamber with Foam rubber or some sort of rubber. Note: I use craft foam from Wal-Mart.

Highland Woodworking sells a bearing 211066-7 for \$9.99 and this bearing will be a loose fit for the 3/8 rod but will work just fine.

The PVC for the vacuum chamber, the lamp rod and the lamp nuts can be purchased at most hardware stores.

The epoxy that I use is the fast setting (5 min) from Harbor freight.

Vacuum Pump and Parts

Vacuum Pump Harbor freight. Prefer the 2 stage but the 1 stage will work.

Vacuum gauge McMaster – Car # 3941K53 \$14.71.

Filter from local auto parts store.

Hoses, clamps and fittings from local hardware store.

OneWay Lathe For Sale

My name is Jon Stephenson, from Superior, Wisconsin. I am the President of the Lake Superior Woodturners - our membership includes individuals from Northeastern Minnesota and Northwestern Wisconsin. I am selling my Oneway 2436 lathe, and was wondering if you could pass on this information to your club membership in your next newsletter or at your next meeting. Interested parties can contact me at: jcstephenson50@gmail.com, or 218-348-5098 for further details.

Thank you for your assistance in letting woodturners in your area know about this opportunity.



Rikons For Sale

From Rich Thelen

A friend has some Rikon items to list as for sale:

Rikon 12" x 16" Mini Lathe #70-100 and stand #70-910 for \$450

Rikon 14" Band saw #10-320 with (2) Rikon Rip Fence #13-900 for \$550

All still in original boxes. Never been opened.

Contact Bob Saxe at 715-832-7134

Below are examples of these items.



Wood, Wood and More Wood

Bob Eberhardt announced at the November meeting that he was ready to lead interested members to a treasure trove of Walnut wood. Many members showed up at 9:00 Saturday morning to form a wood gathering caravan. It proved to be far into the wilds of Wisconsin south of Eleva. All CVWG members take note that in the back of our club shop is a small mountain of wood for the taking. Turning heaven!





SHOW AND TELL



Dennis Ciesielski shows an unfinished Buckthorn which broke in half while turning due to a catch in turning. Dennis said the wood did not fly apart because the faceplate was holding both pieces. He emphasized the safety in using a faceplate to hold the wood on the lathe.



Left Above: Tom Leonard with an unfinished bowl with a large rotted area. He asked how this should be filled. Above right: showing pen wood of the month and 3 other wood pens.



Above: Mark Palma with a homemade glue bottle holder that holds glue at spout and ready to go. Below Left: Mark was challenged by Dennis Ciesielski to make a bowl with layers of denim. The bottom and top was made of Baltic Birch Plywood. Not shown was a Pine Needle basket and a color finishing board.





Above: Joe Nycz with 3 lidded boxes with one made of Paper Birch. Below: A 20 inch plate that was finished using his home made vacuum chuck. Not shown was 2 large deep bowls of Butternut that Joe is going to make into yarn bowls.



PEN WOOD OF THE MONTH RED BALAU

17

COMMON NAME(S): Balau

Scientific Name: Shorea spp.

Distribution: Southeast Asia

Tree Size: 150-200 ft (45-60 m) tall, 3-6 ft (1-2 m) trunk diameter

Color/Appearance: Color can be highly variable depending upon the species: ranging from a pale straw color, to a darker reddish brown.



Grain/Texture: Has a coarse texture with medium to large pores. Grain is sometimes interlocked.

Rot Resistance: Highly variable among species; should be considered as non-durable in regard to decay resistance, and is also susceptible to insect attack.

Workability: Typically hard to work, due to its high density. Some species may have a slight blunting effect on tools due to small levels of silica present in the wood. Glues, stains, and finishes well.

Odor: No characteristic odor.

Allergies/Toxicity: Although severe reactions are quite uncommon, Balau in the Shorea genus has been reported to cause eye, throat, and skin irritation. See the articles Wood Allergies and Toxicity and Wood Dust Safety for more information.

Pricing/Availability: Balau is widely harvested and widely available worldwide. It should be moderately priced despite the fact that it is imported.

Sustainability: Balau is not listed in the CITES Appendices, but many species in the Shorea genus are on the IUCN Red List. The majority of Shorea species are listed as being critically endangered due to a population reduction of over 80% in the past three generations, caused by a decline in its natural range, and exploitation.

Common Uses: Plywood, veneer, general construction, flooring, as well as a number of other general utility purposes.

Comments: Sometimes referred to as "Lauan," wood in the Shorea genus is very commonly used in southeast Asia, and there is an abundance of variety between the different species: each with different working properties, appearances, and mechanical strength values.

The five main groupings for Meranti (Lauan) are: Light Red Meranti, Dark Red Meranti, White Meranti, Yellow Meranti, and Balau. The strength and mechanical values listed at the top of this page represent the average of a handful of species within the corresponding group.

Also called Philippine Mahogany, Meranti bears no relation to what is considered to be "true" mahogany in the Swietenia and Khaya genera.

Related Species:

- **Dark Red Meranti** ([Shorea spp.](#))
- **Light Red Meranti** ([Shorea spp.](#))
- **White Meranti** ([Shorea spp.](#))
- **Yellow Meranti** ([Shorea spp.](#))
- **Lauan**
- **Philippine Mahogany**

From the wood Database ([www. Wood-database.com/](http://www.Wood-database.com/))

Pen type is called the Oxford. Penn State calls it “retro inspired” and “an instant classic.” It was an easy to put together pen. The top half was all one piece leaving just the point, twist mechanism and cross refill. The blank presented a little difficulty in finishing. This wood was very dense and when turned it had a rough surface that had to be sanded a second time and then coated with Ca glue to soften the rough edges.



Feed My People Representative Visits

Amanda Parkinson from Feed My People came to inform the group when the next Feed My People Event will take place. It will be at Florian Gardens on March 7, 2019 from 11am to 7pm. Cost is the same as last year—\$8.00 for the meal and \$20.00 for the meal and a bowl.



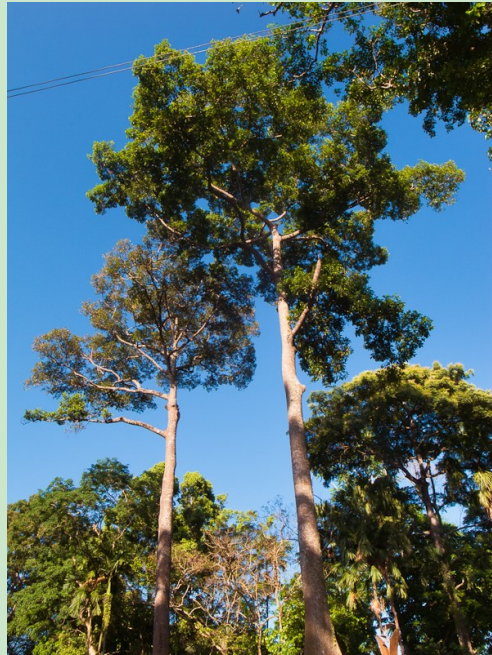
It

The event has a need for 2000 bowls and bowls from CVWG is most important aspect. These are the first ones to be selected. The bowls and other wood turn objects that are put in the Silent Auction raises several thousand dollars.

Several members are already at work turning bowls. One member said he had turned over 100 and another over 50. With those numbers the CVWG should be able to donate a record number of bowls to the event.

Deadline for turning in bowls is the February meeting however, late bowls will still be accepted and delivered to Feed My People. **

A Collage of Balau, Meranti, Lauan Images of the Shorea spp.



A Collage of Uses for the Wood of Balau, Meranti and Lauan



Duane Walker's Turning Tip

22

A Cole chuck is a chuck that has large jaw segments with rubber bumpers to reverse chuck bowls so tenons can be removed or the bottom of the bowl enhanced. Not all turned bowls can be secured on a Cole chuck usually because the angle on the lip of the bowl prevents a secure attachment. Duane came up with a method to attached these bowls securely.

The bowl is wrapped in shrink wrap but avoiding the area to be turned or the area to attach to the lathe. Place the bowl on the Cole chuck and lightly tighten the jaws on the bowl but not overly tighten. Then wrap the bowl and jaws together with shrink wrap and then strapping tape. The shrink wrap prevents the tape from sticking to the bowl and leaving adhesive. The bowl is now secure to turn.



Above Left: Shrink Wrap and Strapping Tape. Above and Below Left : Wrapped jaws and bowl.



Above Left and Above right: Wrapped and tapped jaws and bowl. Below: bowl ready for turning.



CVWG Library Update

The CVWG library of DVD's, woodturning books, etc. that are in the cabinet next to the refrigerator need to be checked out. There should be a library card in each item. When checking out an item write the date and your name and place the card in the front in the file box. When you return the item write the return date on the card and insert it in the DVD, book, etc. We ask that you borrow the items for no more than 2 months. You can always recheck out an item later.

Borrowing Library items are on the Honor System. Please be responsible that you do not misplace a CVWG Library item. If you have any questions or suggestions please feel free to contact me. I am listed on the membership listing.

Dennis Ciesielski, CVWG Librarian

Chippewa Valley Woodturners Guild

Library

Updated November 9, 2018

DVD's

Woodturning Titles

Presenter

<u>In-Depth Hollowing Techniques the Easy Way</u>	Lyle Jamison
<u>Bowl Basics – The Easy Way</u>	Lyle Jamieson
<u>Hollow Forms the Easy Way</u>	Lyle Jamieson
<u>Bowl Turning 2 copies</u>	Del Stubbs
<u>Woodturning – Getting Started Right</u>	Alan Lacer
<u>The Skew Chisel</u>	Alan Lacer
<u>The Skew Chisel – The Dark Side</u>	Alan Lacer
<u>Introduction to Metal Spinning</u>	Glen Gehring
<u>The New Turning Wood (2 copies)</u>	Richard Raffan
<u>Turning Wood</u>	Richard Raffan
<u>Turning Bowls</u>	Richard Raffan
<u>Turned Bowls Made Easy</u>	Bill Grumbine
<u>Woodturning – A Foundation Course</u>	Keith Rowley

<u>Hollow Turning</u>	John Jordan
<u>Heirlooms – Making Things That Last</u>	Mile Mahoney
<u>Woodturning Projects – 1</u>	Rex & Kip
<u>Woodturning Projects - 2</u>	Rex & Kip
<u>Turning Pens</u>	Kip & Rex
<u>Introduction to Segmented Turning</u>	Curt Theobald
<u>Segmented Patterns with Curt Theobald</u>	Curt Theobald
<u>Turning Between Centers – The Basics</u>	Dennis White
<u>Pen Turning</u>	Barry Gross
<u>An Introduction to Bowl Turning</u>	Rus Hurt
<u>Woodturning Wizardry</u>	David Springett
<u>Elegant Finials</u>	Drozda Springett
<u>The Versatile Router</u>	Pat Warner
<u>Fine Woodworking Video Tips Vol. 1</u>	Taunton Press
<u>CVWG Woodturning Expo 2011</u>	CVWG
<u>Woodturning Course</u>	
<u>Mastering Wood Turning – Bowl Turning Techniques</u>	Glen Lucas
<u>Turning for Food</u>	Nick Cook
<u>The Taming of the Skew</u>	Mike Darlow
<u>Making a Peppermill</u>	Ted Sokolowski
<u>Mastering Woodturning Traditional Irish Platter</u>	Glenn Lucas
<u>Deep Hollowing & Woodturning Demo.</u>	Barry Grill
<u>Getting Started in Woodturning</u>	Woodworker's Journal
<u>Projects Along the Woodturning Trail</u>	Alan Lacer
<u>Segmented Woodturners – Arrowmont Symposium 2010</u>	
<u>AAW 2013 Woodturner Invitational 'Harmony' – CD Power Point, play on computer</u>	

General Woodworking Titles

<u>The Way to Woodwork – Vol. 1</u>
<u>The Way to Woodwork – Vol. 2</u>
<u>The Way to Woodwork – Vol. 3</u>
<u>The Way to Woodwork – Perfect Finish</u>
<u>In the Workshop With Charles Neil – Jigs</u>
<u>Bandsaw Tuning</u>
<u>Diamond Sharpening</u>
<u>50 Video Tips & Techniques – Vols. 1, 2, 3</u>

Presenter

Woodworkers Journal
Woodworkers Journal
Woodworkers Journal
Woodworkers Journal
Charles Neil
Alex & Howard Snodgrass
James Barry
Woodsmith Magazine

Table Saw Projects with Ken Burton
Woodworking in Action - The Past 5 Years
Biscuit Joinery – Build a Bookcase
Safety – Technical Techniques

Popular Woodworking
 Woodworking Shows
 Frank Klausz
 Marc Adans

Books - Woodturning

Title

Turning Wood
Turning Toys
The Art of Turned Bowls
Creative Woodturning
The Wendell Castle Book of Wood Lamination
Woodshop Dust Control
Popular Mechanics – Lathe Fundamentals 2 copies
Getting the Most Out of Your Lathe
Woodworking Class – Wood Turning
Learning to Turn
Lathes and Turning Techniques
The Frugal Woodturner
The Lathe Book: A Complete Guide
Turning a Bowl
Classic Woodturning Projects
Beneath the Bark – 25 Yrs. Of Woodturning
 Nish
Woodturning – A Foundation Course
Wood and How to Dry It
Fixtures & Chucks for Woodturning
Fundamentals of Woodturning
Learn to Turn
Turning Bowls Step-By-Step
Collectors' Choice – SOFA Chicago 2002
Ellsworth on Woodturning
Turning Bowls
Useful Beauty Turning Practical Items on a Wood Lathe

Author

Richard Raffan
 Richard Raffan
 Richard Raffan
 Dale L. Nish
 Wendell Castle
 Sandor Nagyszalanczy
 Rick Peters
 Deltacraft
 Barrons
 Barry Gross
 Fine Working, The Best of
 Ernie Conover
 Ernie Conover
 Ernie Conover
 Bonnie Klein
 Kip Christensen & Dale
 Nish
 Keith Rowley
 Fine Woodworking
 Doc Green
 Mike Darlow
 Barry Gross
 David Register
 Professional Woodturners
 David Ellsworth
 Dick Sing
 Dick Sing

<u>Woodturning Today – A Dramatic Evolution</u>	AAW 25 th Anniversary
<u>Woodturning Evolution</u>	N. Agar & D. Springett
<u>Projects for Woodturners</u>	Chris Child
<u>Guide to Work-Holding on the Lathe</u>	Fred Holder
<u>Woodturning Jewellery</u>	Hilary Bonen
<u>Turning Boxes w/ Friction-Fitted Lids</u>	Bill Bowers
<u>Segmented Bowls for the Beginning Turner</u>	Don Jovag
<u>Fabulous Turned-Wood Projects</u>	Hiebert, Hazeu, etc.
<u>Turning Custom Duck & Game Calls</u>	Ed Glenn & Greg Keats
<u>Turned Boxes, 50 Designs</u>	Chris Stott
<u>Turning Boxes & Spindles – Step-by-Step</u>	David Regester
<u>Woodturning – Projects & Techniques</u>	Phil Irons
<u>Lathes and Turning Techniques</u>	Fine Woodworking maga-
<u>zine</u>	
<u>Woodturning Basics</u>	Fine Woodworking maga-
<u>zine</u>	
<u>Woodturning – Projects & Techniques</u>	Woodworker’s Journal
<u>AAW 2016 ATLANTA SYMPOSIUM PRESENTERS</u>	AAW
<u>Learning at the Lathe</u>	AAW
<u>Practical Woodturning Projects</u>	AAW
<u>Getting Started in Woodturning</u>	AAW
<u>AAW Project Book 1987-92</u>	AAW
<u>AAW Techniques & Projects 1993-95</u>	AAW
<u>AAW Techniques & Projects 1999-2001</u>	AAW
<u>AAW Techniques & Projects 1996-98</u>	AAW
<u>AAW Techniques & Projects 2002-04 (2 copies)</u>	AAW
<u>VHS Tapes</u>	
<u>Woodturning with Alan Lacer – Getting Started Right</u>	Alan Lacer
<u>The American Woodshop – Scroll Saw</u>	Scott Phillips
<u>The American Woodshop – Bowl Turning</u>	Scott Phillips
<u>Hartville Tool School of Woodworking</u>	
<u>Spindle Turning</u>	Dave Hout

Basic Pen Turning

Bill Baumbeck

Woodturning – A Foundation Course

Keith Rowley

Manufacturer DVD's

Hand-Crafted pens – The Basics (6 copies)

Penn State Industries

Metal Spinning (3 copies)

Penn State Industries

Using the PSI Duplicator on Your Lathe (2 copies)

Penn State Industries

Easy-Core Coring System (2 copies)

OneWay

Wolverine Sharpening System (3 Copies)

OneWay

Ring Master (1 copy)

Porta-Nails, Inc.

Bandsaw

Jet Tool Co.

The American Asso. Of Woodturners – Who We Are – What We Offer

CVWG 2010 Woodturning Expo – Brief Words from Members

Robert Sorby Specialist Woodturning Tools – Part 1

DVD's and Books – Non-Woodworking Interest

Title

Author

Cast Iron Cookin (DVD)

Dan & Guy Fitzgerald

Note:

Books on general woodworking are placed near the entrance to the shop. All the general woodworking books, magazines and hardcover novels do not need to be checked out.

Next Demonstration

Power Sanding

Ron Bartz

Demonstrator

Ron has given many demonstrations to the CVWG over the years. These include: wine glasses; shop made face plates; shop turned handles, and castable acrylics. Ron gave a special Saturday class on making acrylic pieces for turning and is often available for the learn to turn activities with members of the Boys and Girls Club.

Demonstration:

I will be demonstrating how to make sanding pads for power sanding. These have a foam backing use hook and loop. The materials, tools and assembly. The types of sand paper used. Going to also show a the new segment press for assembling segment rings give info on how it works. Follow up with the newest and greatest finish scary smooth.



COMING EVENTS

Meetings are first Wednesday of the month at 7 pm. Open house—Coffee and Chips - is the second Saturday of the month from 8 am to 12 pm

Meeting Dates and Demonstrations

December 5—Ron Bartz –Making Sanding Disks

January 2—Bob Eberhardt—Bowl Saver System

February 6—Tom Leonard—Pen Finishing

March 6—Mark Palma—Sanding, Scraping and Surface Embellishment

April 3—To Be Announced

May 1—To Be Announced

Open House-Coffee and Chips Dates

December 8

January 12

February 9

March 9

April 13

May 11

Meetings and Coffee and Chips are held in the Eau Claire Insulation building at 1125 Starr Ave on the northeast side of Eau Claire, Wi.

Board of Directors for 2018

31

President	<i>Duane Walker</i> 1-715-577-2248 elk.stir@gmail.com
Vice President	<i>John Layde</i> 715-834-9371 ouzo@charter.net
Treasurer/ Membership	<i>Randy Patzke</i> 1-612-845-6185 arpatzke@hotmail.com
Secretary	<i>John DeRyckere</i> 715.838.9480 jderyck@gmail.com
Program Director	<i>Mark Palma</i> 1-612.991.7733 marksworkshop@gmail.com
At Large Director	<i>Joe Nycz</i> 1-715-937-2803 nyczjoseph@live.com

Non Board Positions

Librarian	<i>Dennis Ciesielski</i> 715.233.0236 daciesie@gmail.com
Newsletter Editor	<i>Tom Leonard</i> 715.831.9597 tl9597@charter.net
Web Master	<i>Jerry Engedal</i> 715.834.1022 joanandjerrye@gmail.com
Photographer	<i>Bruce Lindholm</i> 715.836.7375 dustyden@att.net

***Photos of Show and Tell / Gallery items
provided by : Bruce Lindholm***